



1. Use tap screws to secure bridge to wall strips, repeat on other side



2. Place wall strip/bridges against wall



3. Loosely secure wall strip to wall



4. Loosely secure wall strip (3 points) using screw or bolt if brick wall



5. Slide middle wall strips together & secure together using tap screws



6. Ensure both sets of wall strips and bridges are square & secured to wall



7. Connect side panel to wall strips on both sides using M6 screws



8. Sides now connected to wall strips/bridges



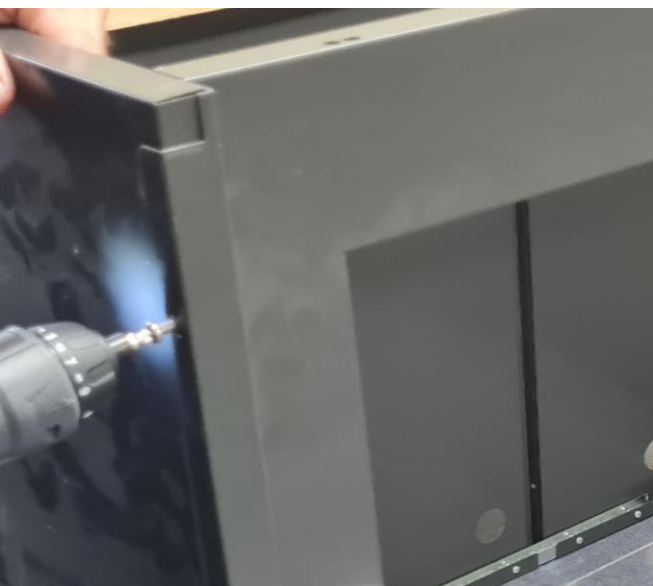
9. Secure bottom channel to front panels using 4x tap screws, as per step 2



10. Slide top support channel into top of both front panels



11. Secure top channel to both front panels using 4 x tap screws



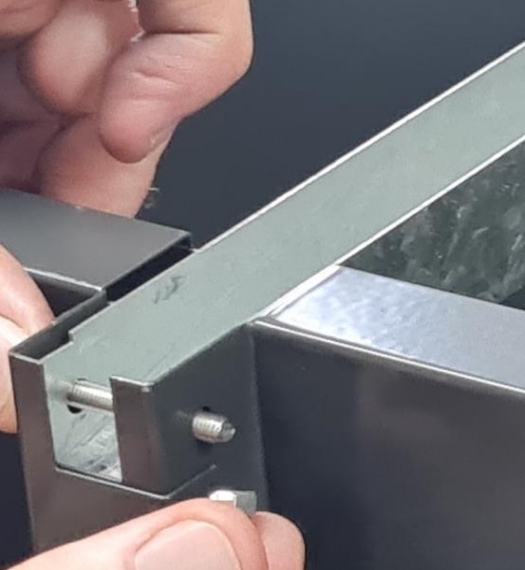
12. Join side to front panel with 2x M6 screws, repeating for other side



13. Position box to ensure square



14. Position join channel between front and rear panels



15. Secure joint channel to fronts using bolt and dome nut



16. Position 1st lid and ensure lid is square with box



17. Insert bolt through lid, then through large washer, and into (larger) side panel



18. Secure bolt using nut



19. Position 2nd lid and ensure square with box – if space is difficult, do after step 19



20. Insert bolt through lid 1, join channel, then into washer



21. Insert bolt through joint channel and 2nd lid, secure with nut



22. Secure 2nd lid with bolt/washer



23. Insert latch hook into underside of lid



24. Screw latch onto front panel



25. Insert handle into door



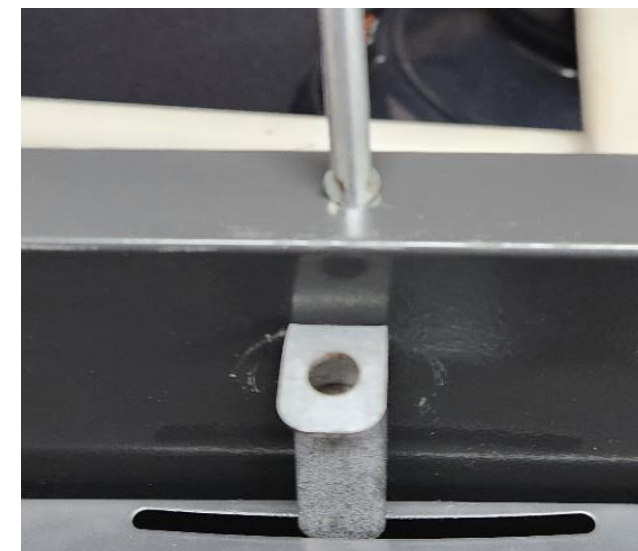
26. Handle is secured when you hear a click



27. Position door inside front panel



28. Insert latch into door to hold in place



29. Insert door stay into hole at top of front panel(s)



30. Insert door stay into hole in underside of lid to hold open



31. Door stay holds lid open when connected to both holes



32. Store door stay inside front panel when box is closed



**ALL
DONE!**

