



1. Insert one rear panel into the other



2. Slide bottom channel into slot at base of rear panels



3. Secure channel to rear panels us 4x tap screws



4. Secure top brace to both rear panels using 4x tap screws



5. Slide side panel into rear panel



6. Join rear panel to side panel with 2x M6 screws, repeating for other side



7. Slide half or full front panel into corresponding front panel



8. Secure bottom channel to front panels using 4x tap screws, as per step 2



9. Slide top support channel into top of both front panels



10. Secure top channel to both front panels using 4 x tap screws



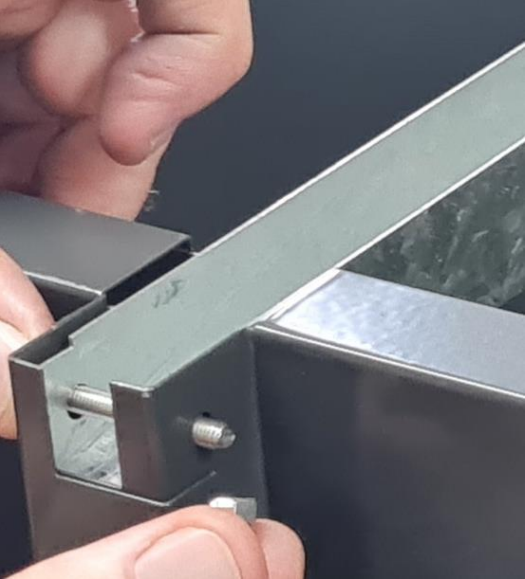
11. Join side to front panel with 2x M6 screws, repeating for other side



12. Position box to ensure square



13. Position join channel between front and rear panels



14. Secure joint channel to fronts using bolt and dome nut

15. Position 1st lid and ensure lid is square with box

16. Insert bolt through lid, then through large washer, and into (larger) side panel



17. Secure bolt using nut

18. Position 2nd lid and ensure square with box – if space is difficult, do after step 19

19. Insert bolt through lid 1, join channel, then into washer

20. Insert bolt through joint channel and 2nd lid, secure with nut



21. Secure 2nd lid with bolt/washer



22. Insert latch hook into underside of lid



23. Screw latch onto front panel



24. Insert handle into door



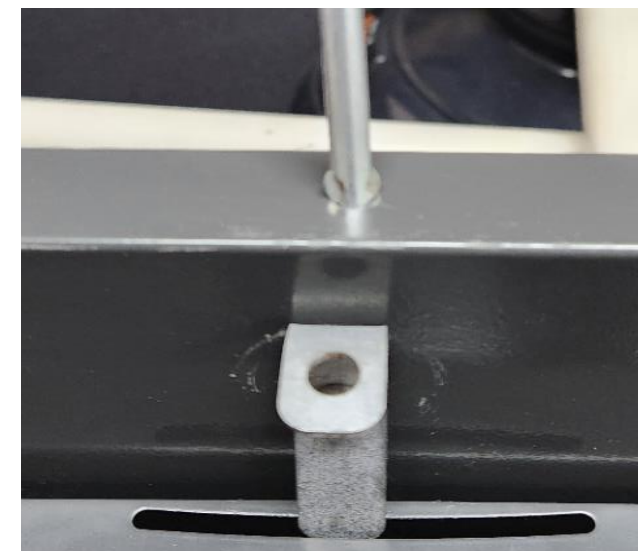
25. Handle is secured when you hear a click



26. Position door inside front panel



27. Insert latch into door to hold in place



28. Insert door stay into hole at top of front panel(s)



29. Insert door stay into hole in underside of lid to hold open



30. Door stay holds lid open when connected to both holes



31. Store door stay inside front panel when box is closed



**ALL
DONE!**



te